

LUXORJET

1. White colour as a background on the whole surface of the acrylic trophy
2. White colour as a background under the colour pixels
3. Slightly transparent colour print (without a white colour)

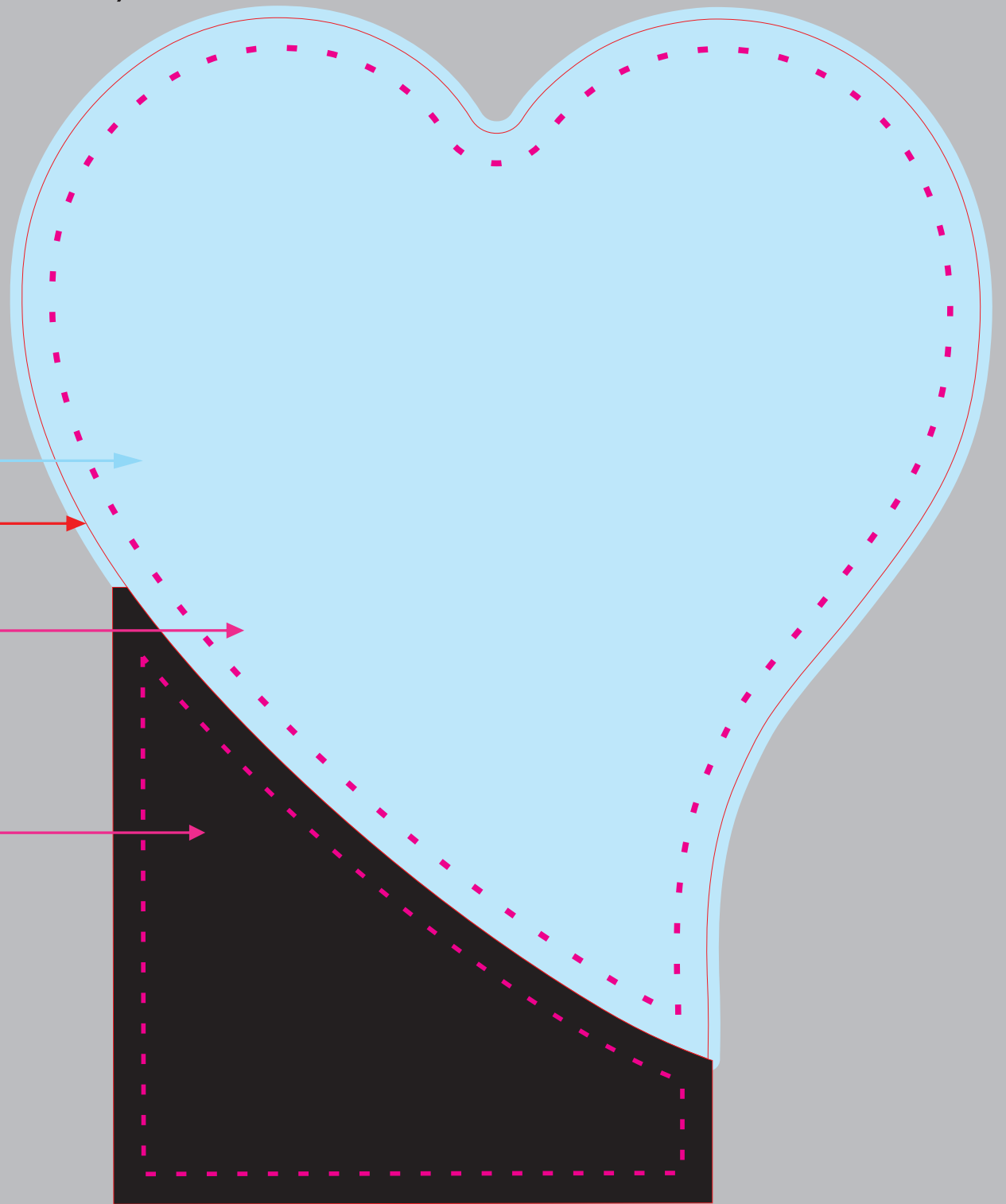
Tips when preparing the artwork by yourself

LUXORJET

AC001/LUX

- if the coloured background has to reach the edge of the acrylic extend it beyond the outline of the glass 2 mm on each side
- minimum resolution for illustrations or photos 300 dpi
- external outline of the acrylic - TEMPLATE please do not change the color and thickness of the line
- all fonts converted to curves
- smallest font used 8 pt
- minimum thickness of lines used in the design 0.2 mm

an area where essential elements should be placed, i.e. text, logo, etc.



AC001

ENGRAVING

Tips when preparing the artwork by yourself

AC001/GR

- external outline of the acrylic - TEMPLATE please do not change the color and thickness of the line
- all fonts converted to curves
- smallest font used 8 pt
- minimum thickness of lines used in the design 0.2 mm
- laser engraving area
- we only use vector objects (inscriptions, logos, characters)
- the pattern for engraving will be prepared in grey using 70 % black in CMYK scale



AC001