

LUXORJET

1. White colour as a background on the whole surface of the acrylic trophy
2. White colour as a background under the colour pixels
3. Slightly transparent colour print (without a white colour)

Tips when preparing the artwork by yourself

LUXORJET

If the coloured background has to reach the edge of the acrylic, extend it beyond the outline of the glass 8 mm on each side.

minimum resolution for illustrations or photos 300 dpi

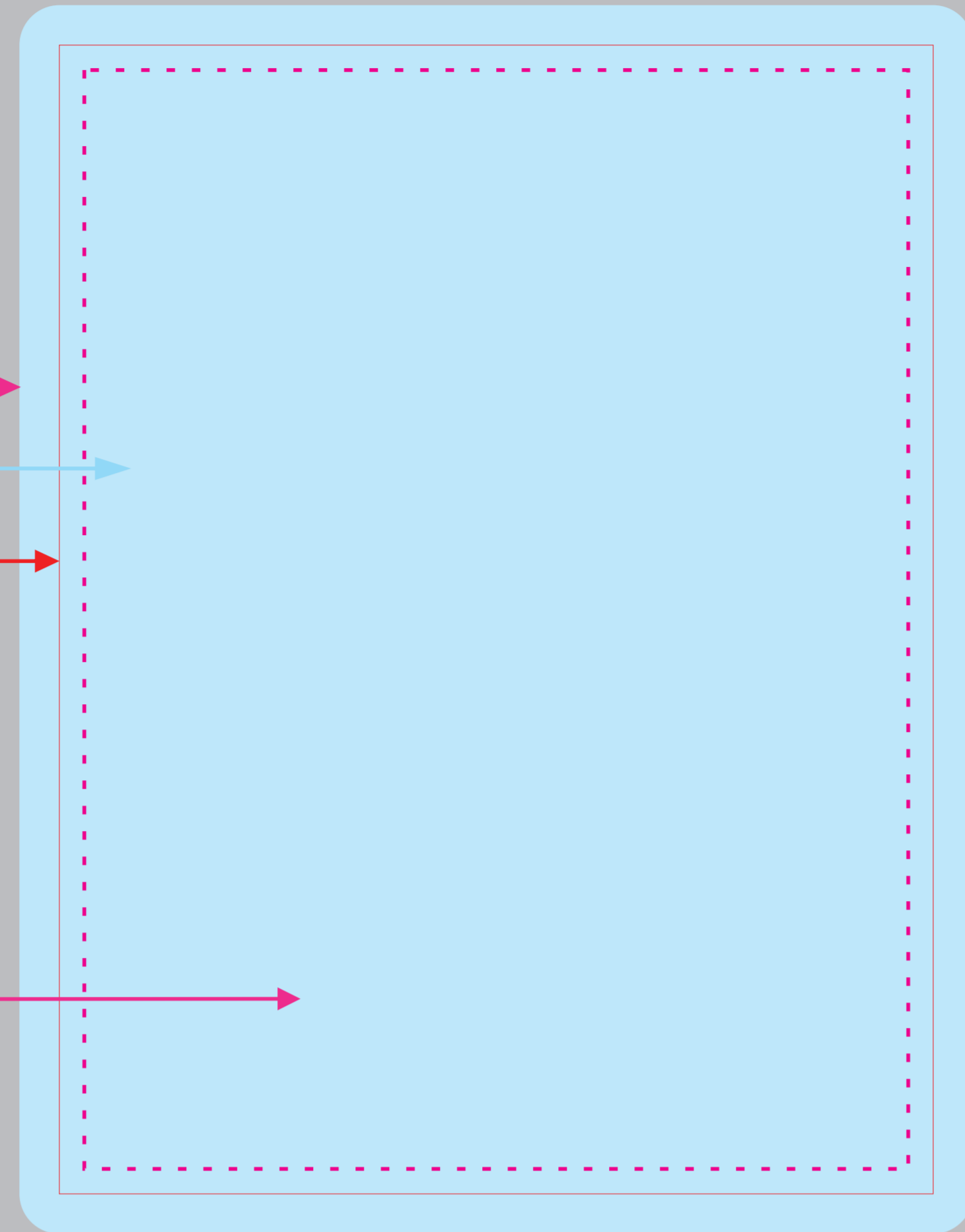
external outline of the acrylic - TEMPLATE
please do not change the color and thickness of the line

all fonts converted to curves

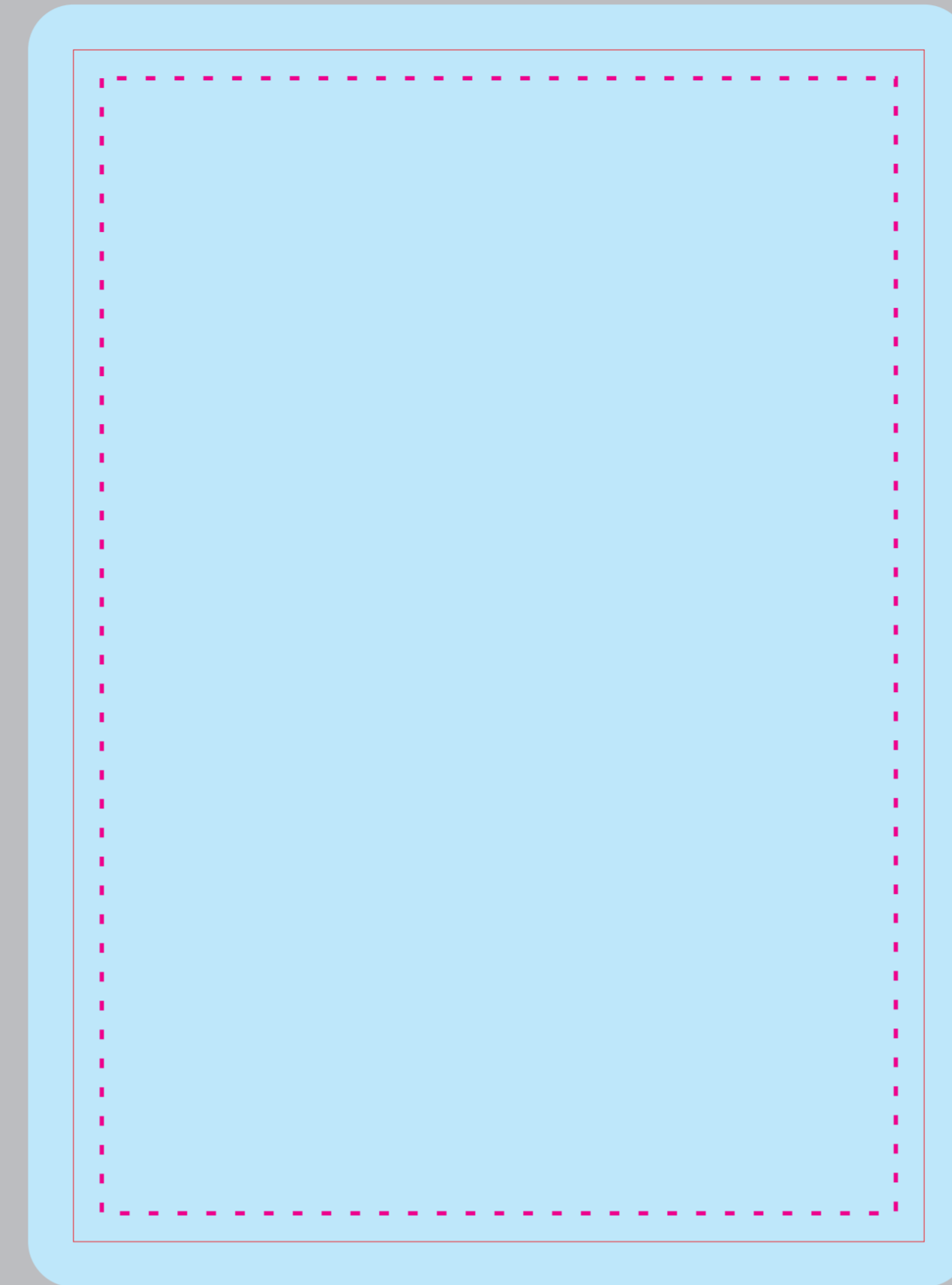
smallest font used 8 pt

minimum thickness of lines used in the design 0.2 mm

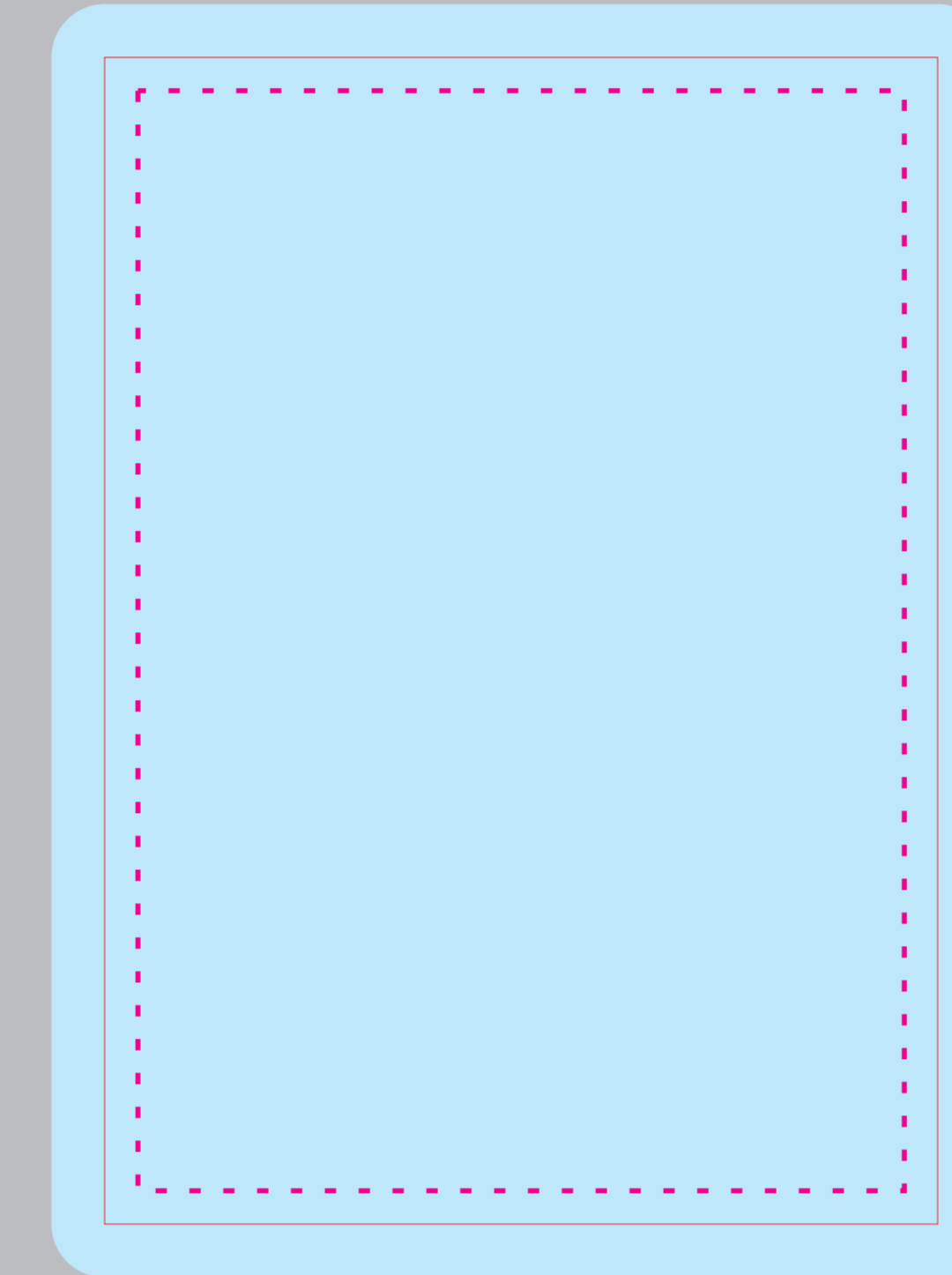
an area where essential elements should be placed, i.e. text, logo, etc.



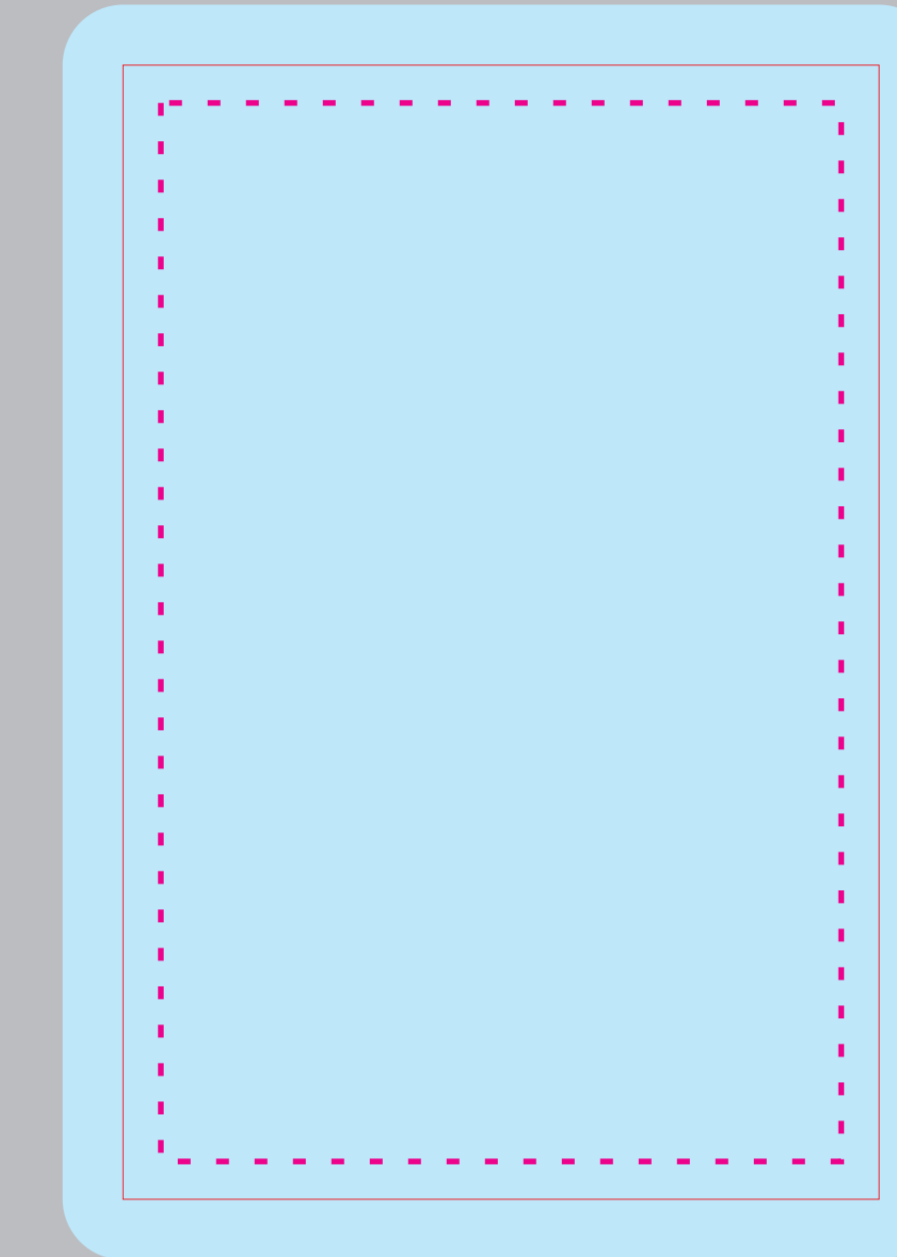
AC003-230



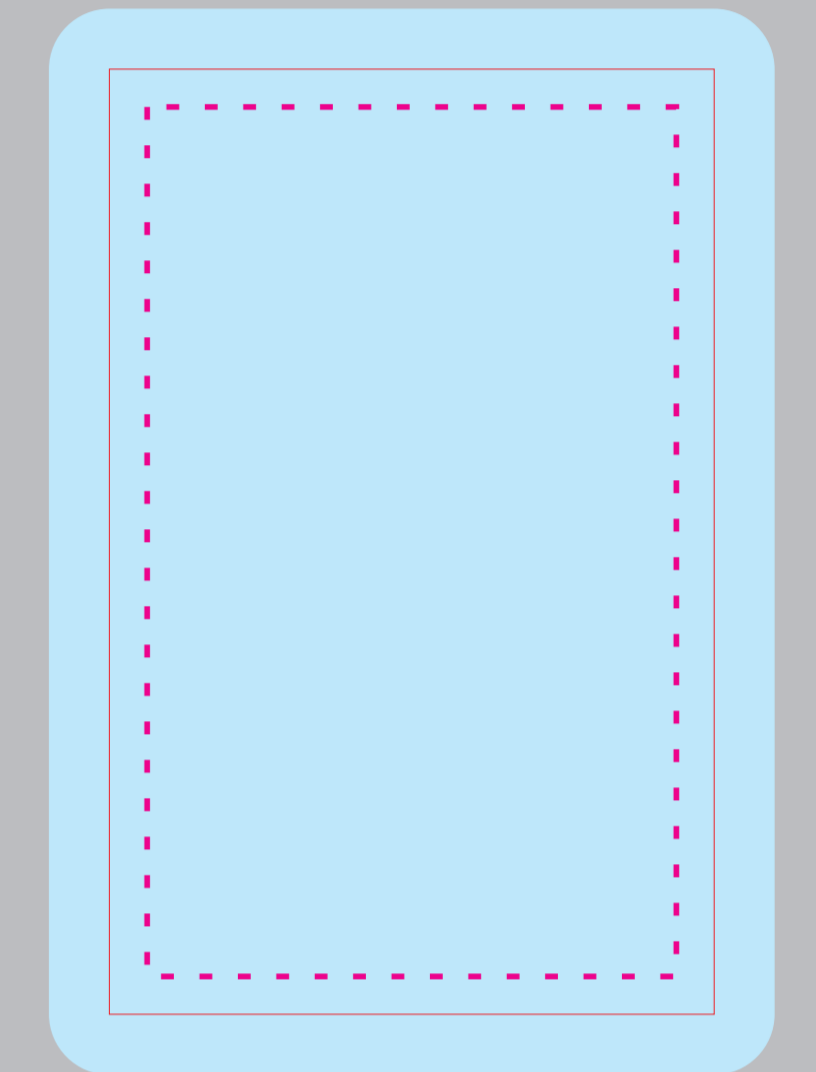
AC003-210



AC003-175



AC003-150



AC003-125

ENGRAVING

Tips when preparing the artwork by yourself

external outline of the acrylic - TEMPLATE
please do not change the color and thickness of the line

all fonts converted to curves

smallest font used 8 pt

minimum thickness of lines used in the design 0.2 mm

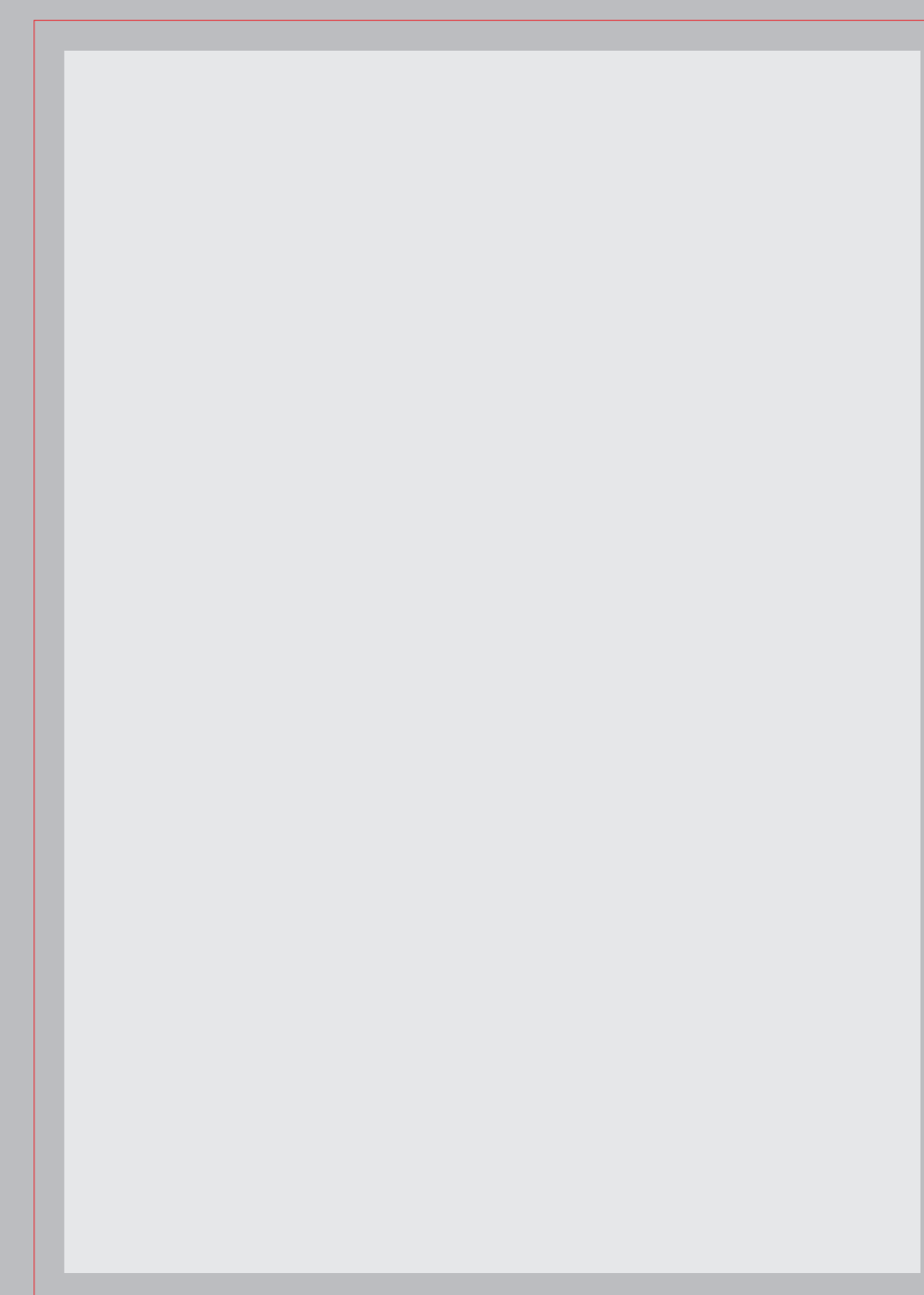
laser engraving area

we only use vector objects (inscriptions, logos, characters)

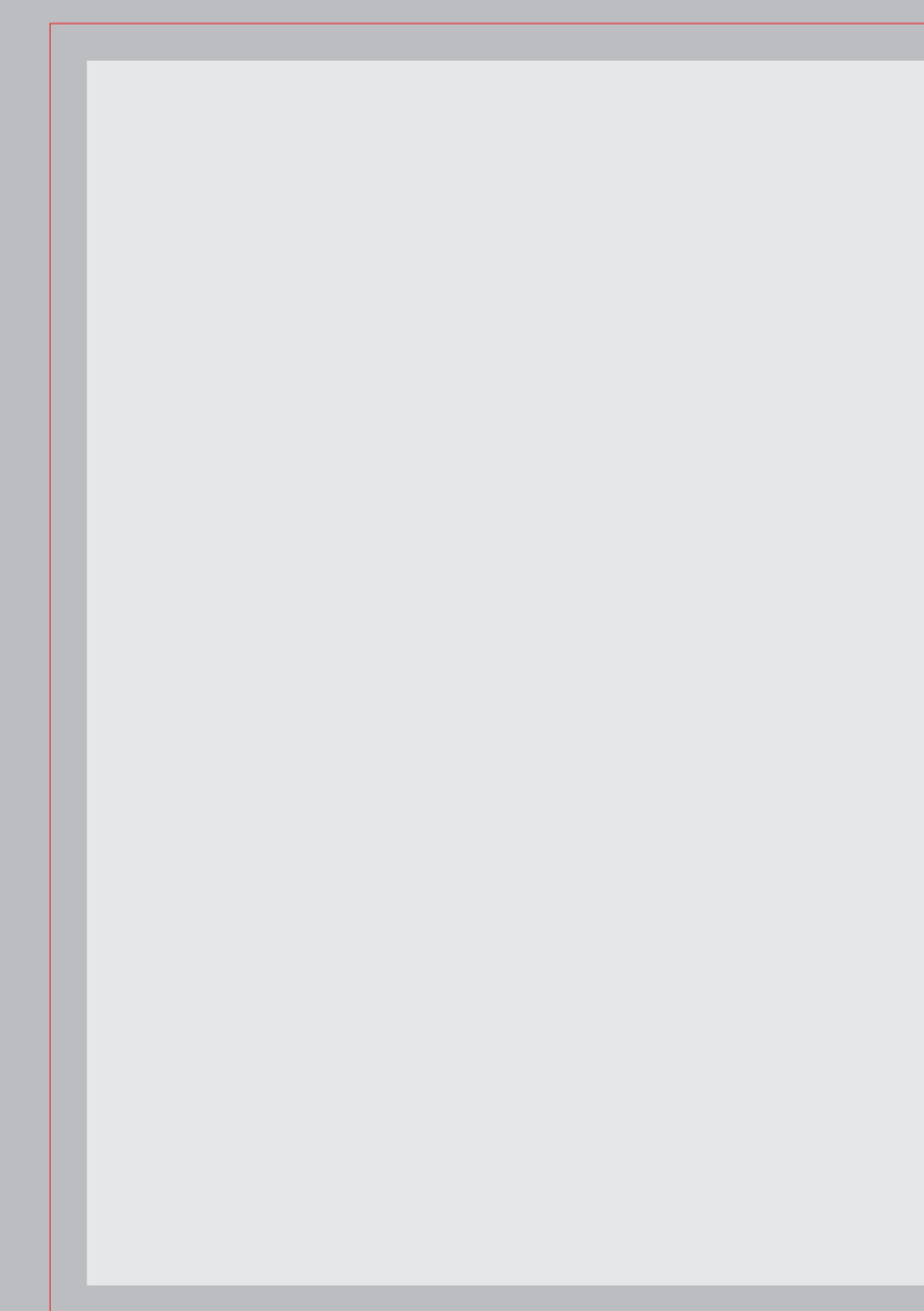
the pattern for engraving will be prepared in grey using 70 % black in C M Y K scale



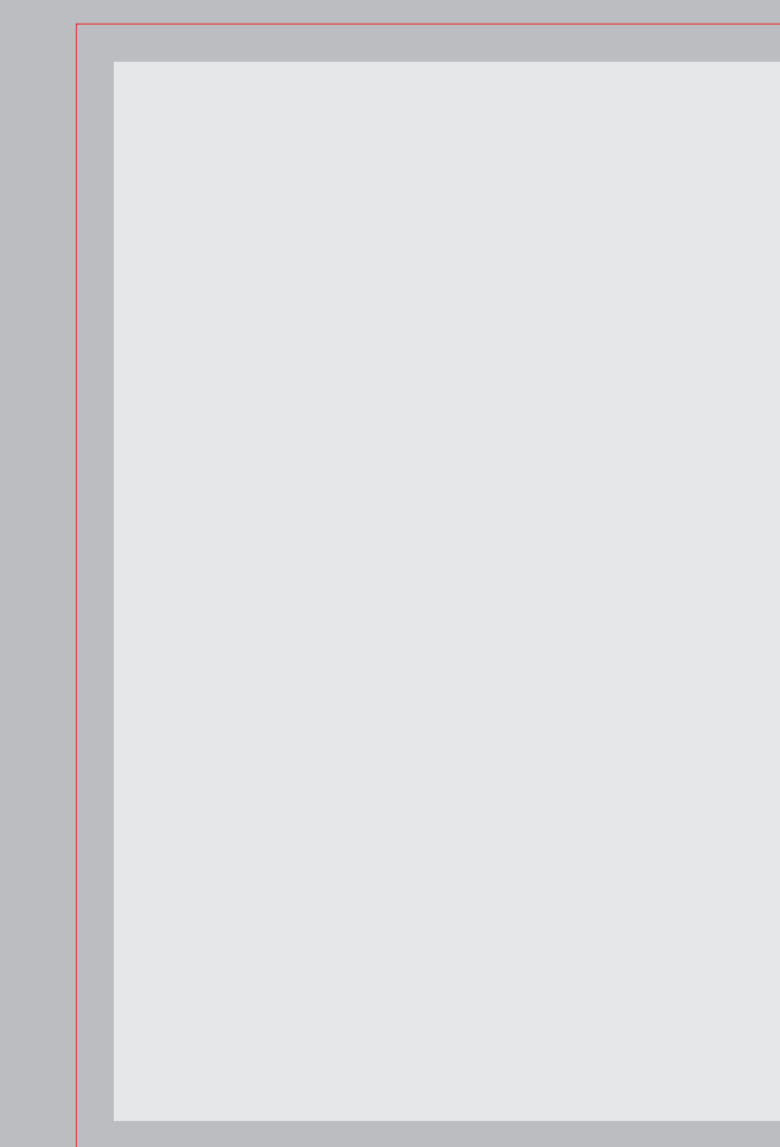
AC003-230



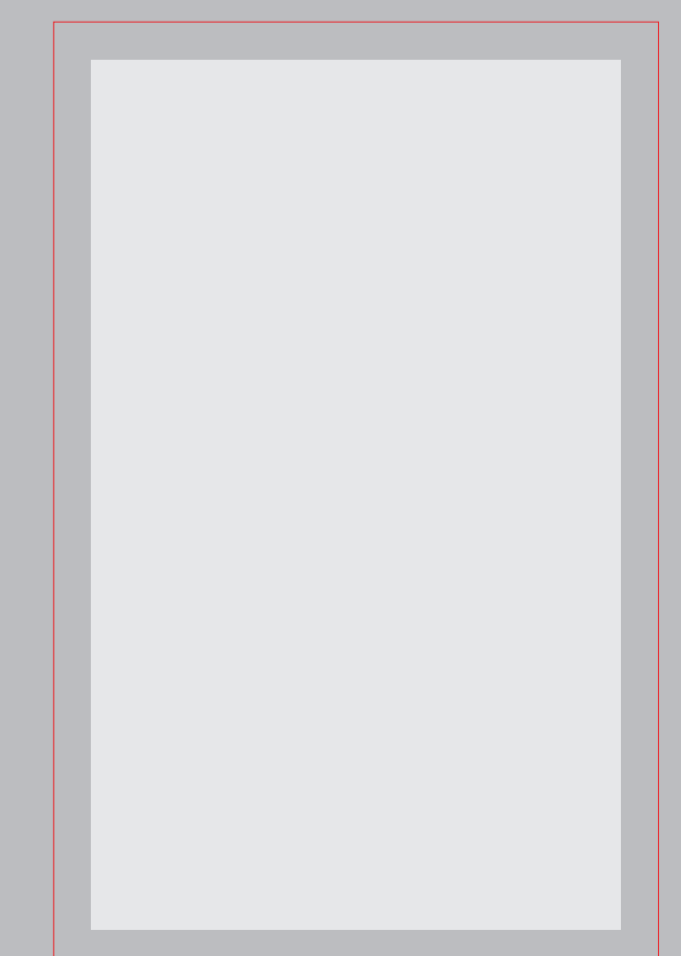
AC003-210



AC003-175



AC003-150



AC003-125