

# LUXORJET

- 1. White colour as a background on the whole surface of the acrylic trophy
- 2. White colour as a background under the colour pixels
- 3. Slightly transparent colour print (without a white colour)

### Tips when preparing the artwork by yourself

**LUXORJET**

If the coloured background has to reach the edge of the acrylic extend it beyond the outline of the glass 2 mm on each side

minimum resolution for illustrations or photos 300 dpi

external outline of the acrylic - TEMPLATE please do not change the color and thickness of the line

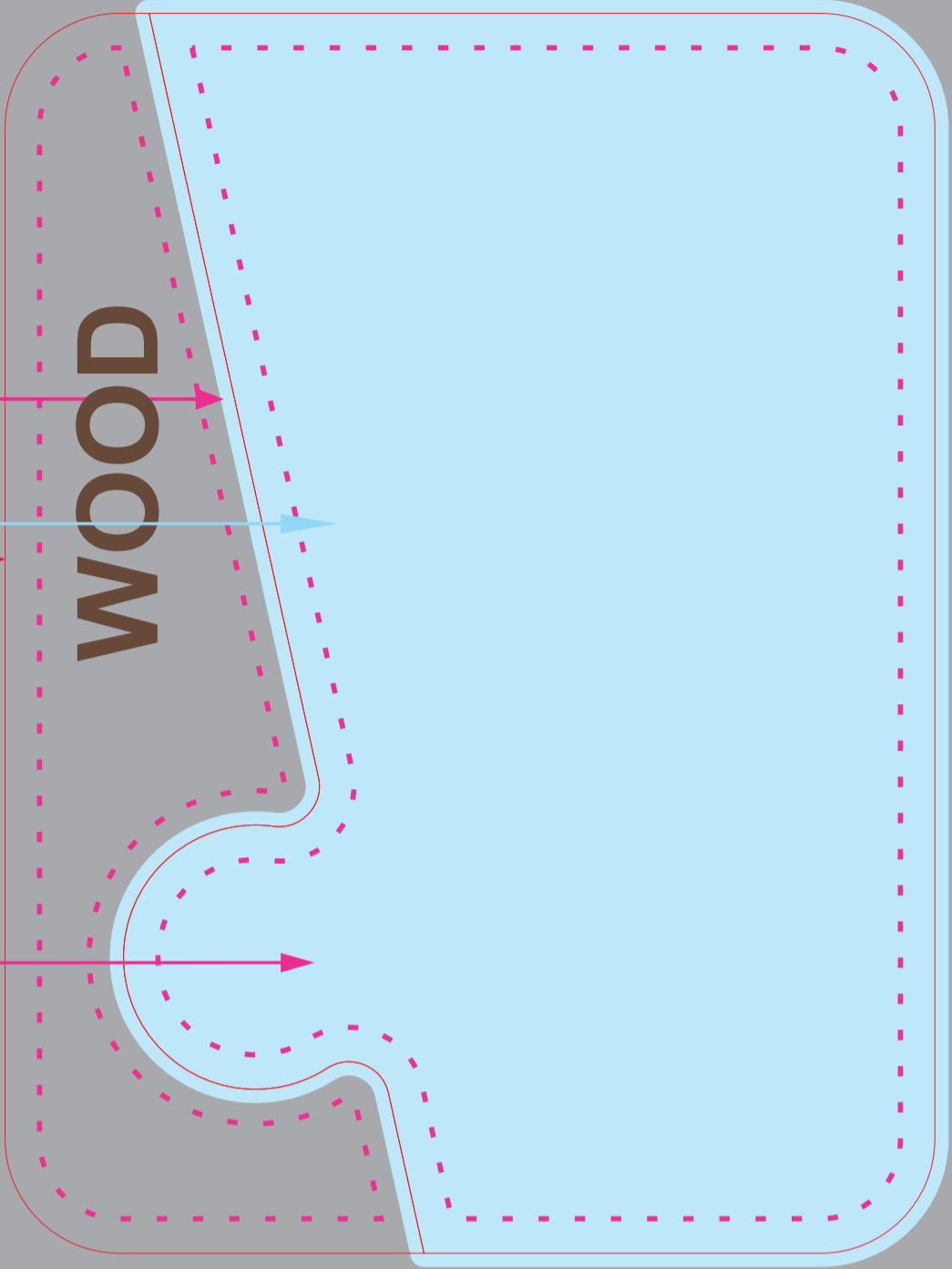
**all fonts converted to curves**

smallest font used 8 pt

minimum thickness of lines used in the design 0.2 mm

AW001/LUX

an area where essential elements should be placed, i.e. text, logo, etc.



AW001

# ENGRAVING

### Tips when preparing the artwork by yourself

**AW001/GR**

external outline of the acrylic - TEMPLATE please do not change the color and thickness of the line

**all fonts converted to curves**

smallest font used 8 pt

minimum thickness of lines used in the design 0.2 mm

**laser engraving area**

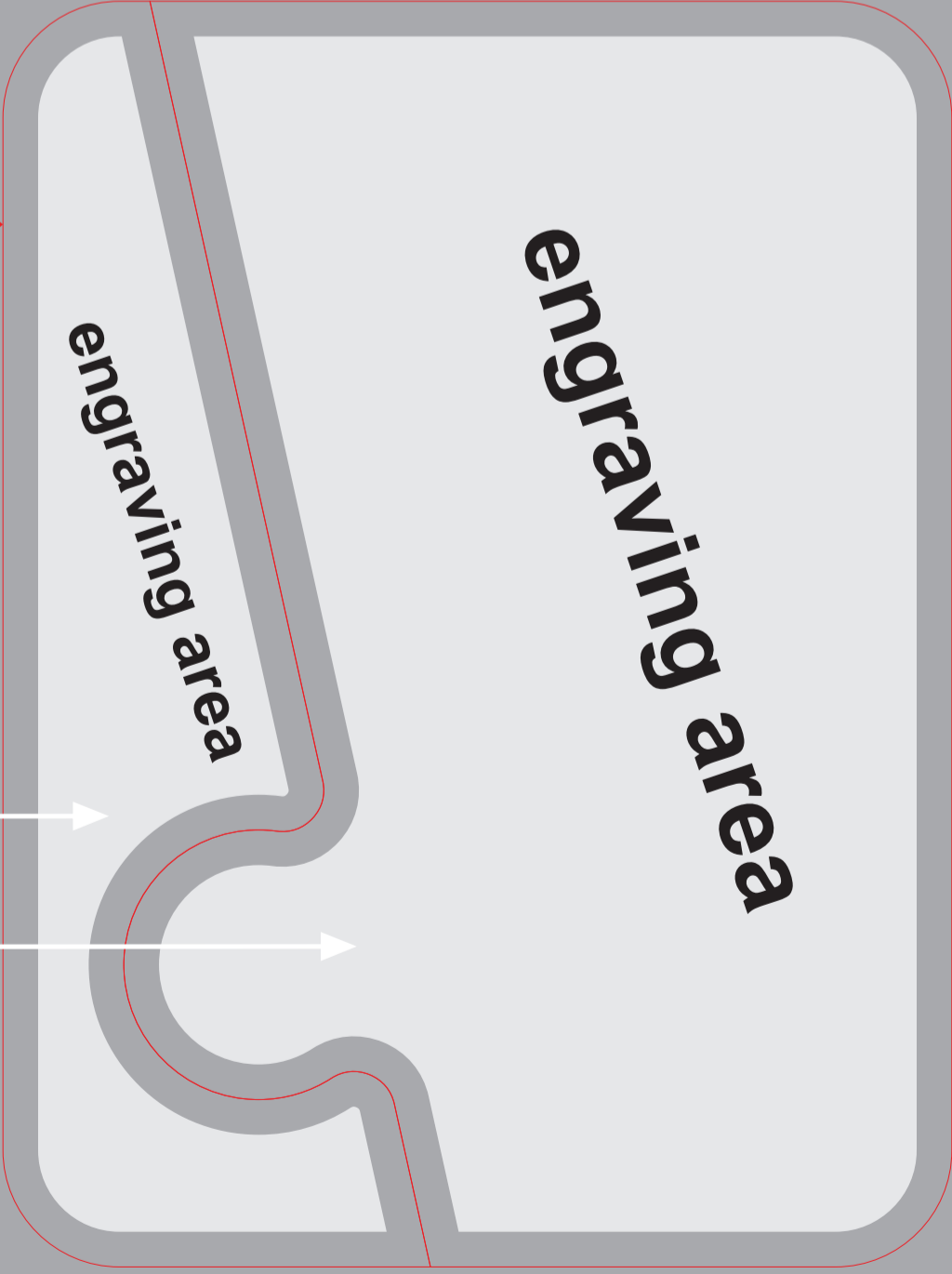
we only use vector objects (inscriptions, logos, characters )

**WOOD**

the pattern for engraving will be prepared in 100 % black in C M Y K scale

**ACRYLIC**

the pattern for engraving will be prepared in grey using 70 % black in C M Y K scale



AW001